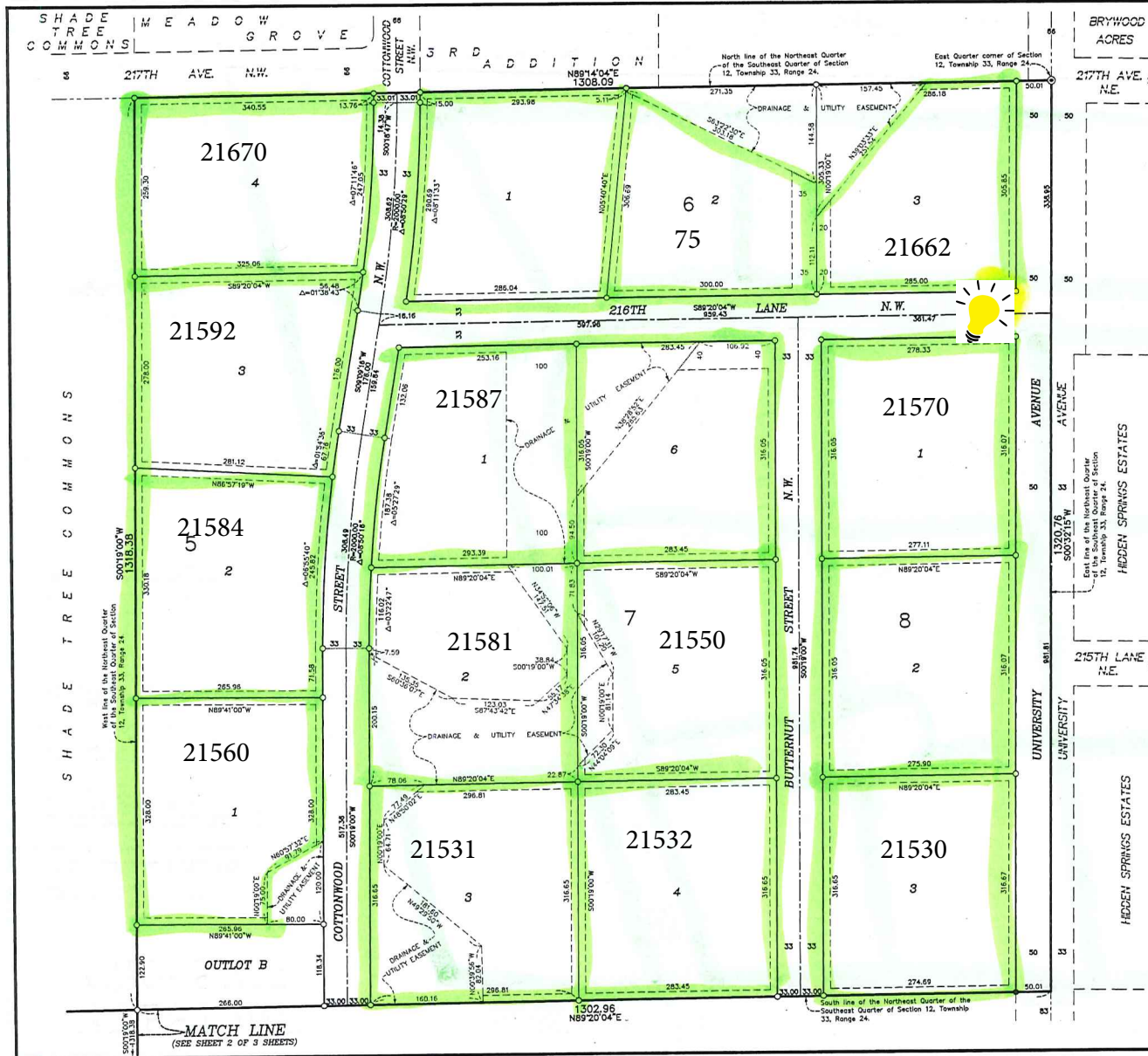


OFFICIAL PLAT



BK70 of Plat pg 23 CITY OF OAK GROVE  
 COUNTY OF ANOKA  
 SEC. 12, TWP. 33, RGE. 24

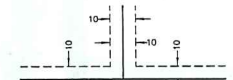
# MILESTONE CROSSING

- Denotes found iron monument
- Denotes 1/2 inch by 14 inch iron monument set and marked with license number 20595
- ⊗ Denotes Anoka County Cast Iron Monument

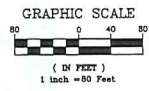
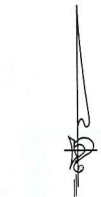
All monuments required by Minnesota Statute, whether shown on this plat or not, will be set within one year of the recording date of this plat, and shall be evidenced by a 1/2 inch by 14 inch iron pipe marked by RLS 20595.

For the purposes of this plat, the South line of the Southwest Quarter of the Southeast Quarter of Section 12, Township 33, Range 24 is assumed to have a bearing of South 89°26'06" West.

DRAINAGE AND UTILITY EASEMENTS ARE SHOWN THUS:  
 (NOT TO SCALE)



being 10 feet in width, and adjoining all lot lines unless otherwise shown on this plat.



**PIONEER** Engineering  
 CIVIL ENGINEERS LAND PLANNERS LAND SURVEYORS LANDSCAPE ARCHITECTS