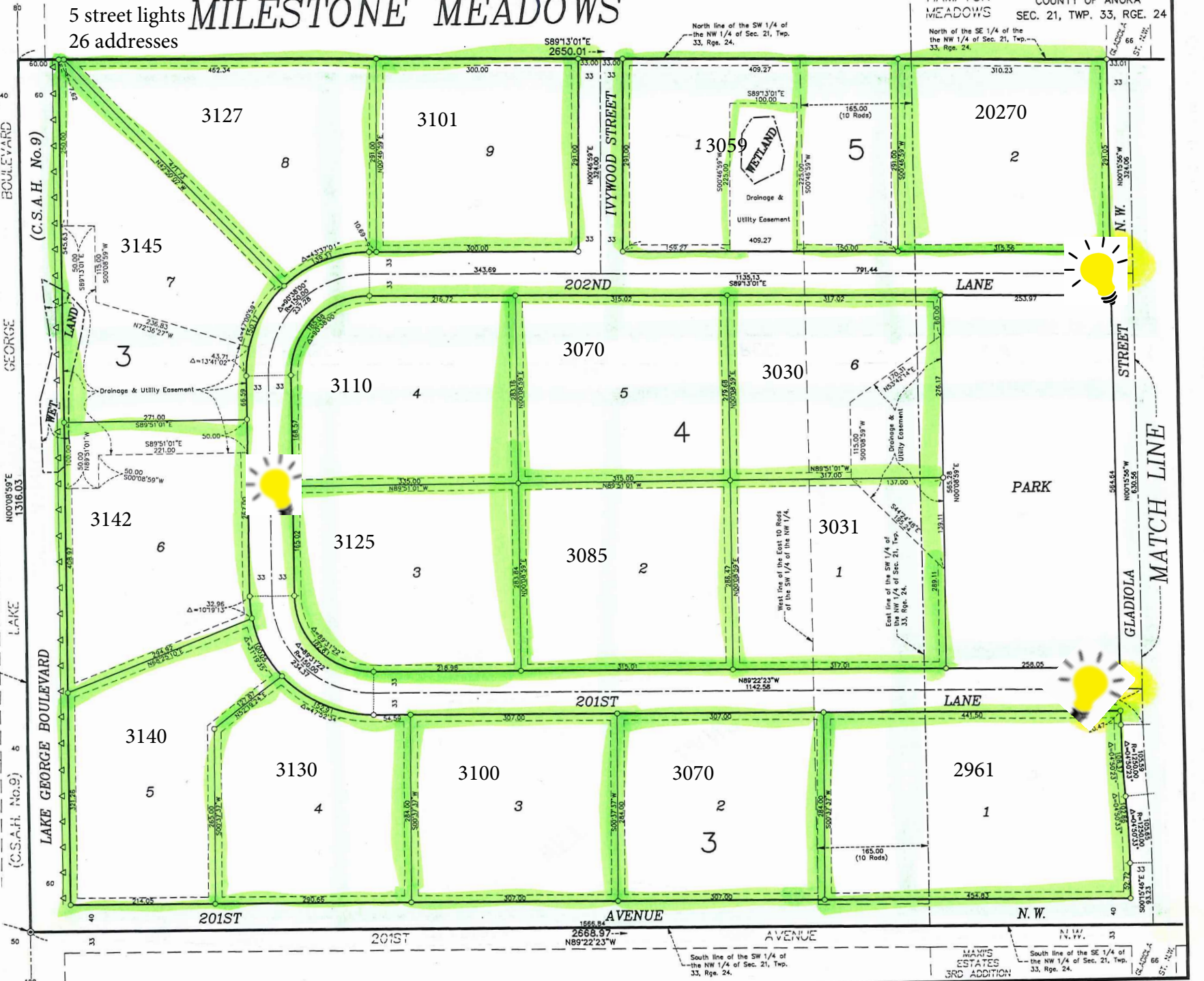


5 street lights 26 addresses

MILESTONE MEADOWS



MAY'S ESTATES
 3RD ADDITION

South line of the SE 1/4 of the NW 1/4 of Sec. 21, Twp. 33, Rge. 24.

South line of the SW 1/4 of the NW 1/4 of Sec. 21, Twp. 33, Rge. 24.



WETLANDRY'S ADDITION

CITY OF OAK GROVE
 COUNTY OF ANOKA
 SEC. 21, TWP. 33, RGE. 24

Book 64 page 48